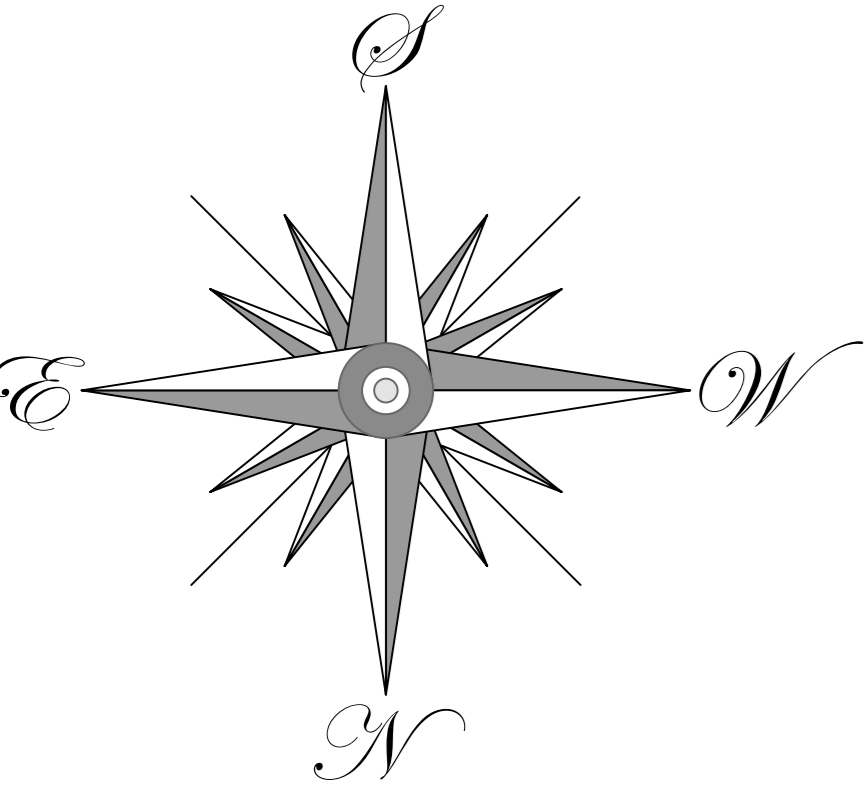


Notes:

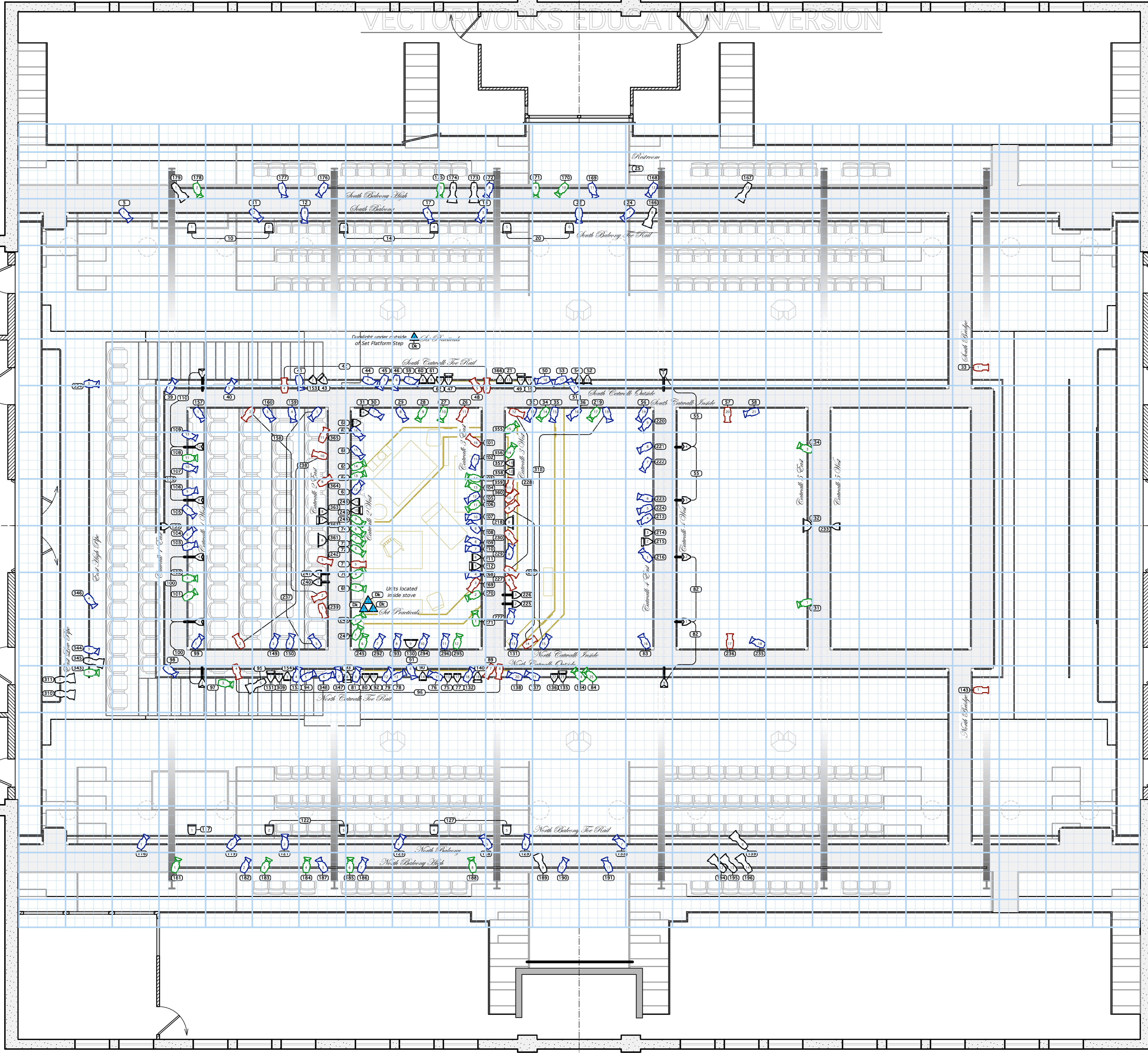
- Units number from North to South, and East to West.
- Top Hang Mezzanine Units.
- Top Hang Balcony Units
- Top Hang Balcony Toe Rail Units, **Except** for PAR64s Which are to be Side Hung.
- Side Hang Catwalk Units
- Use Side arms to hang Catwalk Units as Indicated.
- See Paperwork for Houselight, and Restroom Light Patch.
- Indicated two-lers are optional - ME's Option
- Install circuits to Set Practicals before the stage floor is painted.
- Reference grid is 10" spacing with a heavy line every 5'

Circuit Balance Info:
 South Balcony and Mezzanine - 33 Spare
 North Balcony and Mezzanine - 33 Spare
 Catwalks (including High Pipes) - 29 Needed
 West Low Pipe - 14 Spare
 East Low Pipe - 12 Spare



Key

- Source 4 36" @ 575 watts
- Source 4 26" @ 575 watts
- Source 4 19" @ 575 watts
- Source 4 10" @ 575 watts
- Source 4 V. Narrow Spot PAR @ 575 watts
- Source 4 Narrow Spot PAR @ 575 watts
- Source 4 Medium PAR @ 575 watts
- Source 4 Wide PAR @ 575 watts
- Wide PAR64 @ 1000 watts
- Berkey 14" Super Scoop @ 2000 watts
- Wybron Color Ram II
- Floor Mount



Show: *A Doll's House*

Theater: *Orvine Palace - Reilly Theatre - Louisiana State University*

Director: *George Judy*

Scale: *3/16" = 1' - 0"*

Date: *January 18, 2010*

Designer: *Ken White*

View: *Master Plot*

M.E.: *Ken White*

Draft: *K.W. (Vector Works 2010)*