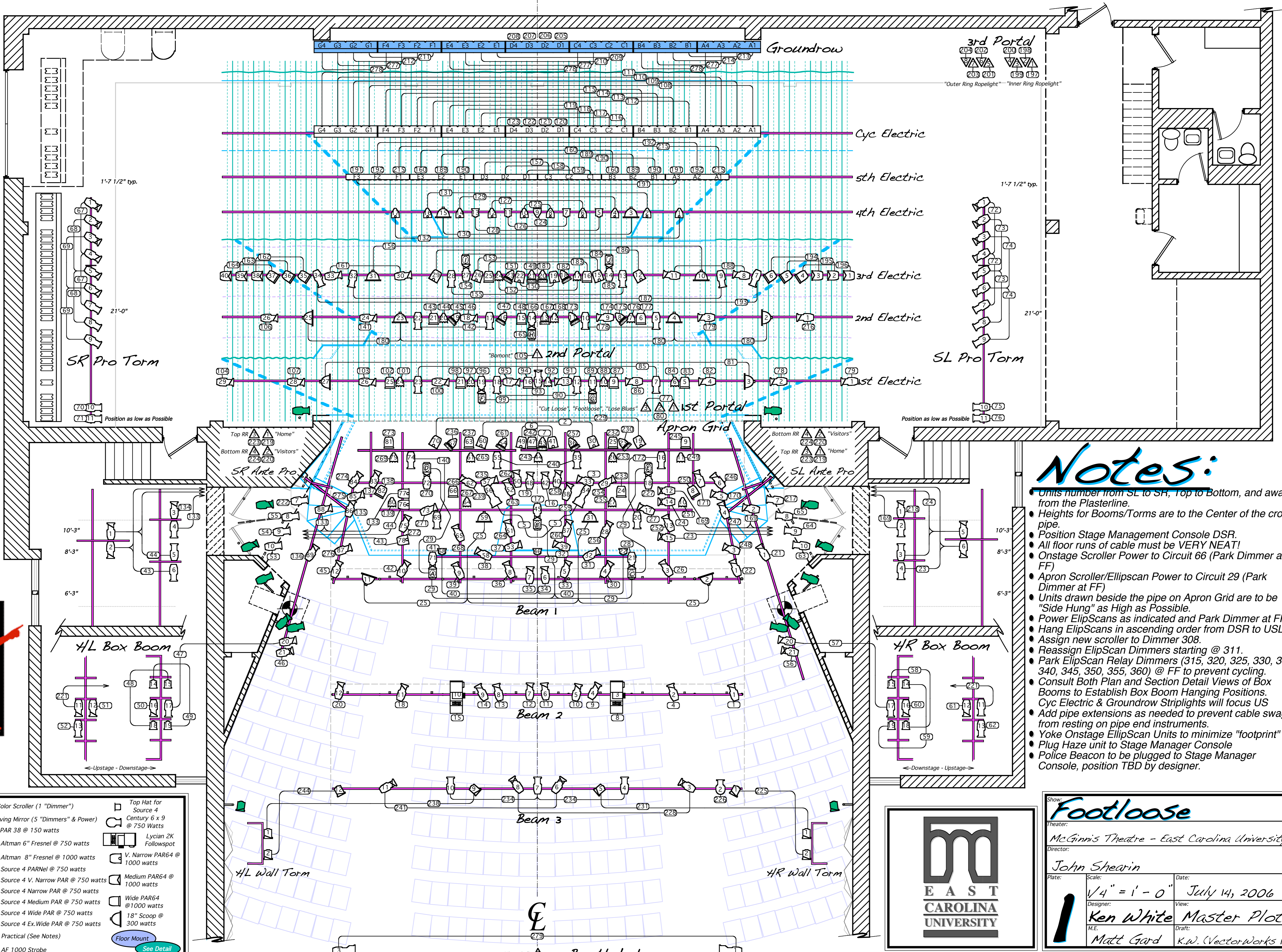




- 38 - Black Trap
- 37 - White Cyc
- 36
- 35
- 34
- 33 - Cyc Electric - Trim Batten @ G&D Spike
- 32 - Fly Schedule
- 31 - Church Window Storage?
- 30 - Burger Blast Storage?
- 29 - 5th Electric - Trim Batten @ 21'-0"
- 28
- 27
- 26 - 4th Electric - Trim Batten @ 22'-0"
- 25
- 24 - 3rd Portal Backing
- 23 - 3rd Portal and Legs
- 22 - Border
- 21 - High School Gym Baskets
- 20 - Stars
- 19
- 18 - 3rd Electric - Trim Batten @ 19'-0"
- 17
- 16 - Gym Dance Decor
- 15 - Border
- 14
- 13
- 12 - 2nd Electric - Trim Batten @ 18'-6"
- 11
- 10 - Border
- 9 - 2nd Portal
- 8 - Stars
- 7 - Black Legs
- 6 - Gym Dance Decor
- 5 - 1st Electric - Trim Batten @ 19'-0"
- 4 - Stars
- 3 - Gym Climb Ropes and Rings
- 2 - Main Drape (Storage)
- 1 - Asbestos

Key

	Chroma-Q Color Scroller (1 "Dimmer")		Top Hat for Source 4 Century 6 x 9 @ 750 Watts
	ElipScan Moving Mirror (5 "Dimmers" & Power)		Lycian 2K Followspot
	Source 4 50" @ 575 watts		V. Narrow PAR64 @ 1000 watts
	Source 4 36" @ 575 watts		Medium PAR64 @ 1000 watts
	Source 4 26" @ 575 watts		Wide PAR64 @ 1000 watts
	Source 4 19" @ 575 watts		18" Scoop @ 300 watts
	Source 4 10" @ 575 watts		Practical (See Notes)
	6" Striplight (4 circuit) @ 500 watts		Floor Mount
	6" Striplight (3 circuit) @ 300 watts		AF 1000 Strobe
	4" Blacklight Tube		See Detail



- ## Notes:
- Units number from SL to SR, Top to Bottom, and away from the Plasterline.
 - Heights for Booms/Torms are to the Center of the cross pipe.
 - Position Stage Management Console DSR.
 - All floor runs of cable must be VERY NEAT!
 - Onstage Scroller Power to Circuit 66 (Park Dimmer at FF)
 - Apron Scroller/Ellipscan Power to Circuit 29 (Park Dimmer at FF)
 - Units drawn beside the pipe on Apron Grid are to be "Side Hung" as High as Possible.
 - Power ElipScans as indicated and Park Dimmer at FF.
 - Hang ElipScans in ascending order from DSR to USL.
 - Assign new scroller to Dimmer 308.
 - Reassign ElipScan Dimmers starting @ 311.
 - Park ElipScan Relay Dimmers (315, 320, 325, 330, 335, 340, 345, 350, 355, 360) @ FF to prevent cycling.
 - Consult Both Plan and Section Detail Views of Box Booms to Establish Box Boom Hanging Positions.
 - Cyc Electric & Groundrow Striplights will focus US
 - Add pipe extensions as needed to prevent cable swag from resting on pipe end instruments.
 - Yoke Onstage EllipScan Units to minimize "footprint"
 - Plug Haze unit to Stage Manager Console
 - Police Beacon to be plugged to Stage Manager Console, position TBD by designer.



Show: **Footloose**

Theater: **McGinnis Theatre - East Carolina University**

Director: **John Shearin**

Scale: **1/4" = 1'-0"** Date: **July 14, 2006**

Designer: **Ken White** View: **Master Plot**

M.E.: **Matt Gard** Draft: **K.W. (Vectorworks 12)**