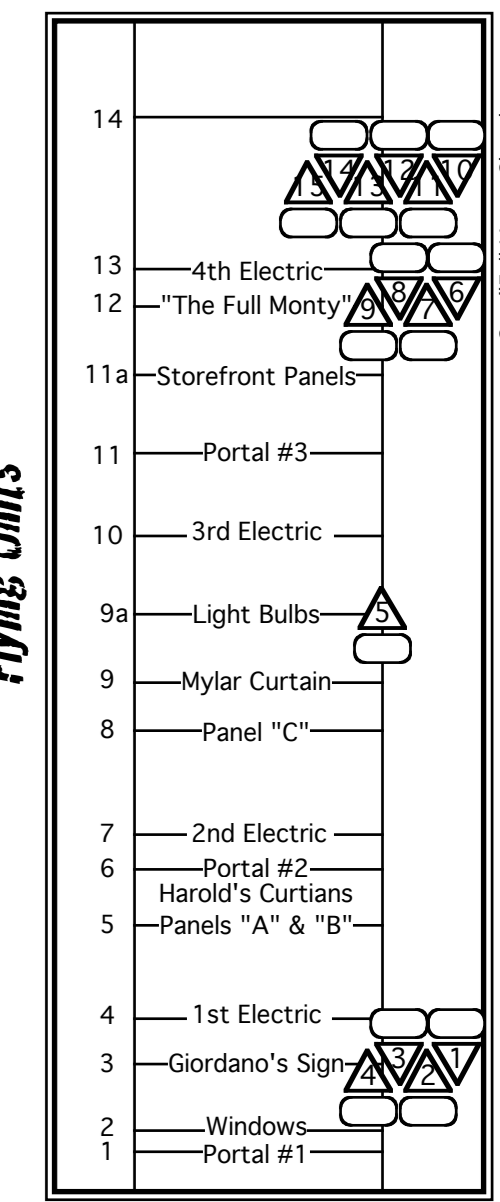
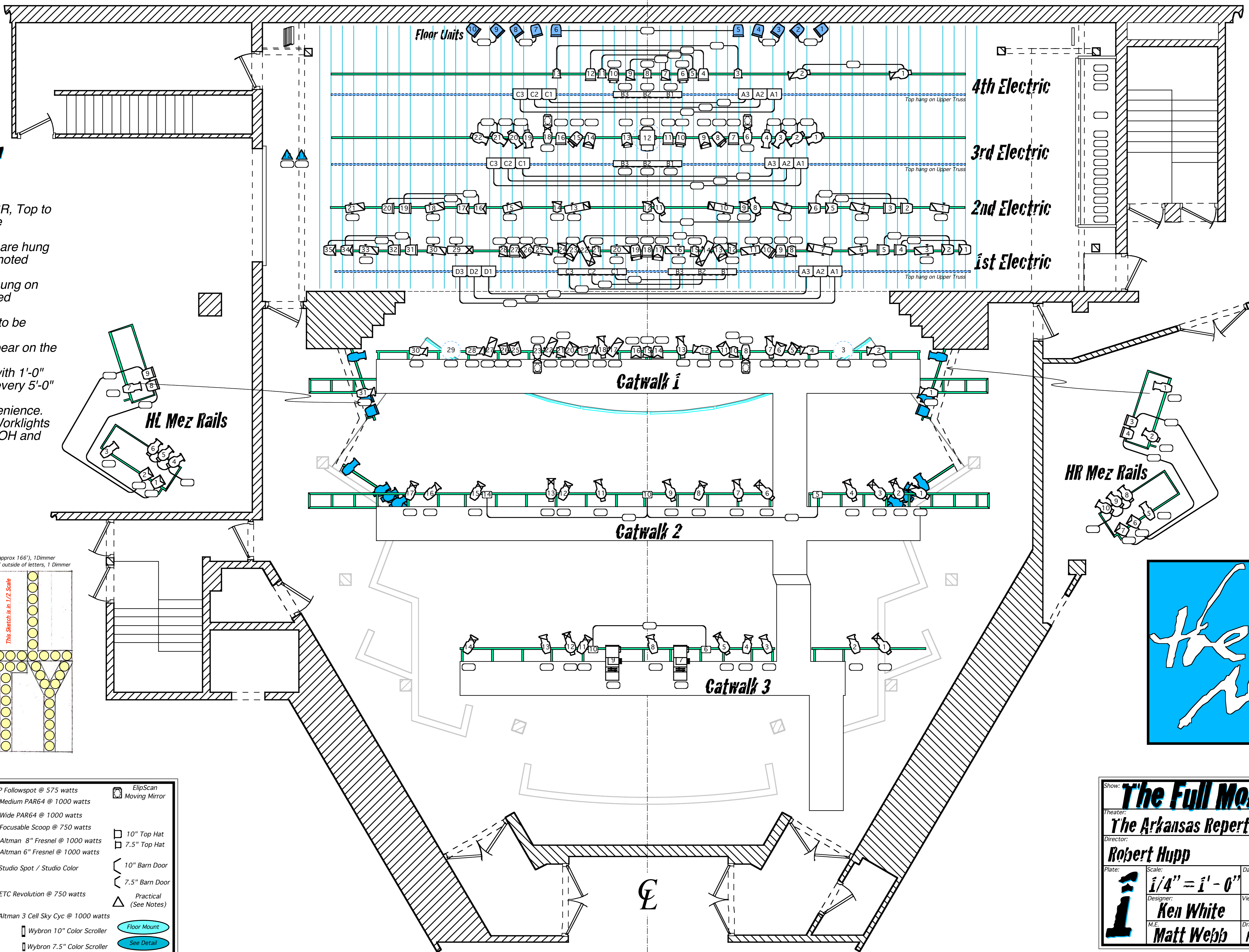
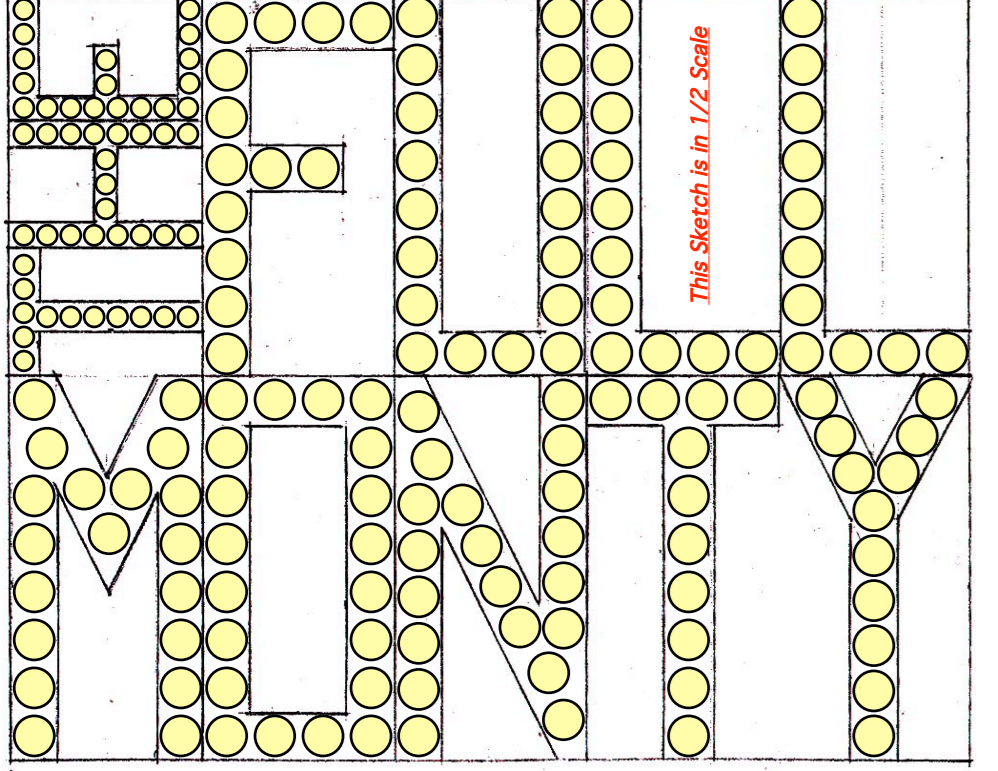


# Notes:

- Units number from SL to SR, Top to Bottom, and away from the Plasterline.
- All units in Catwalks 2 & 3 are hung on the Upper Pipe unless noted otherwise.
- All units in Catwalk 1 are hung on the Lower Pipe unless noted otherwise.
- Top Hats and Barn Doors to be determined during Focus
- Other Important Notes appear on the Drawing.
- There is a reference grid with 1'-0" spacing and a heavy line every 5'-0" drawn under the onstage instruments for your convenience.
- Please Hang Scoops for Worklights in available spaces both FOH and Onstage.

"The" = 49 @ R20 50 watts = 1 Dimmer (2450)  
 "Full Monty" = 136 @ R40 120 watts = 6 Dimmers  
 Each letter on the sign to be outlined w/White 1" Cir Duralight (approx 166'), 1 Dimmer  
 Stock Star Stobes to be distributed throughout in the "corners" outside of letters, 1 Dimmer



Key	
	Lycian Midget HP Followspot @ 575 watts
	R40 6' Striplight
	Source 4 - 36° @ 575 Watts
	Source 4 - 26° @ 575 Watts
	Source 4 - 19° @ 575 Watts
	Altman 20°/40° Zoom @ 575 Watts
	Altman 30° @ 575 Watts
	Altman 20° @ 575 Watts
	Altman 6 x 9 @ 575 Watts
	Altman 6 x 12 @ 575 Watts
	Altman 6 x 16 @ 575 Watts
	Medium PAR64 @ 1000 watts
	Wide PAR64 @ 1000 watts
	Focusable Scoop @ 750 watts
	Altman 8" Fresnel @ 1000 watts
	Altman 6" Fresnel @ 1000 watts
	Studio Spot / Studio Color
	ETC Revolution @ 750 watts
	Altman 3 Cell Sky Cyc @ 1000 watts
	Wybron 10" Color Scroller
	Wybron 7.5" Color Scroller
	ElipScan Moving Mirror
	10" Top Hat
	7.5" Top Hat
	10" Barn Door
	7.5" Barn Door
	Practical (See Notes)
	Floor Mount
	See Detail



Show: **The Full Monty**  
 Theater: **The Arkansas Repertory Theatre**  
 Director: **Robert Hupp**  
 Date: **May 16, 2007**  
 Designer: **Ken White**  
 View: **Light Plot**  
 M.E.: **Matt Webb**  
 Draft: **K.W. (VectorWorks 12.5.1)**