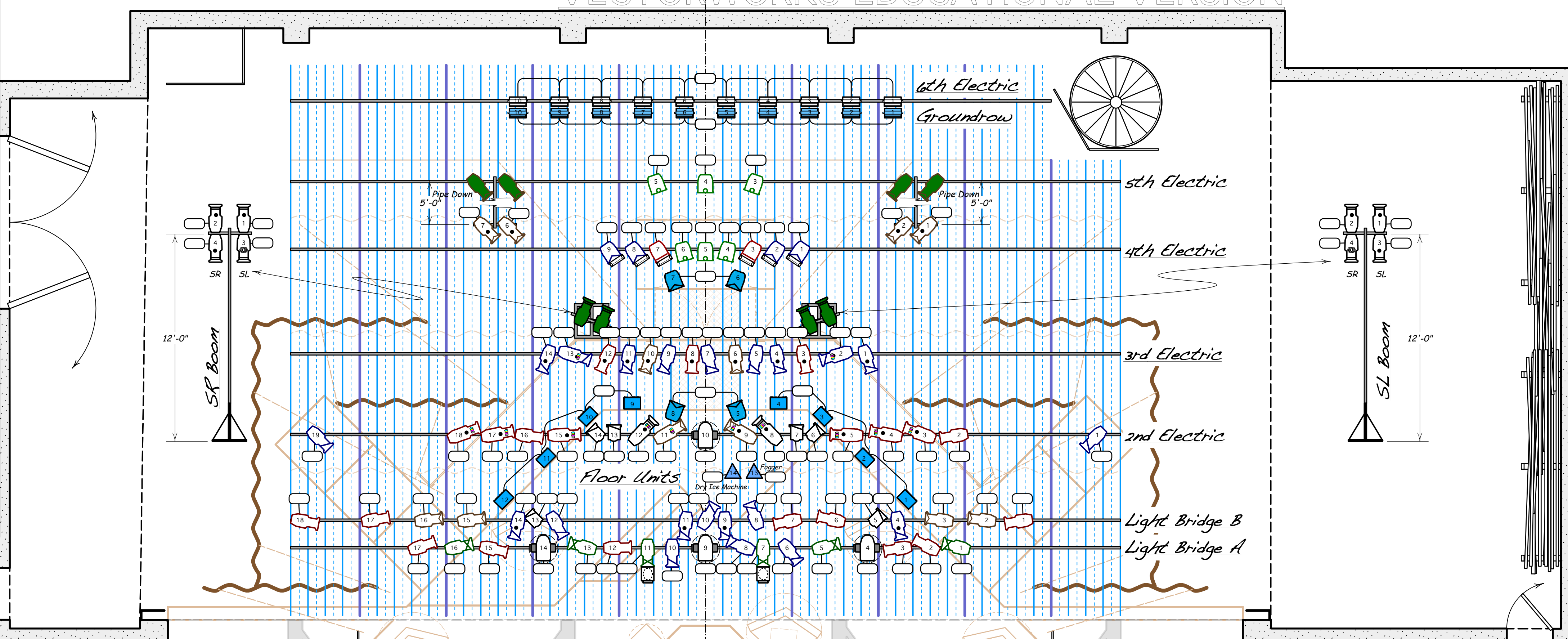
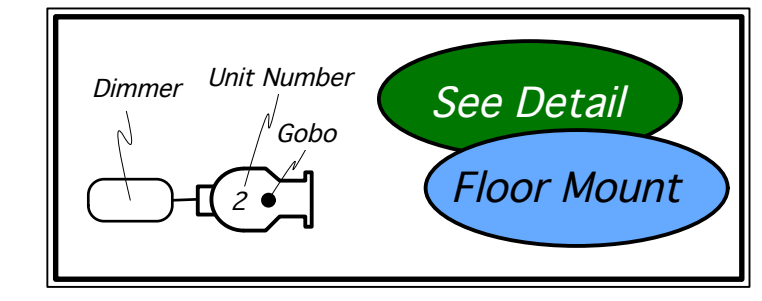


Notes:

- Units number from SL to SR, away from the plater line, and Top to Bottom.
- All indicated two-fers are optional. See designer regarding positioning of all practical / special hang units.
- All Scrollers, SeaChangers, and Moving lights to be patched as attributes Intensity Channel.
- Update Lightwright with all address assignments, Softpatch to be installed electronically.
- Where possible install all color and templates prior to focus.
- A significant number of circuits will need to be run from the stagehouse to front-of-house.
- Due to the difficulty in accessing the electrics after the set is installed, it is critical that all onstage instrumentation be fully documented and troubleshot before the set is installed.
- See designer regarding Boom, Floor Units, and Groundrow placement



29 - 6th Electric
28 -
27 -
26 -
25 - Cyc
24 - 5th Electric
23 -
22 - Border
21 -
20 - 4th Electric
19 -
18 -
17 -
16 -
15 - Legs
14 - Border
13 - 3rd Electric
12 -
11 -
10 - Legs
9 -
8 - 2nd Electric
7 -
6 - Border
5 -
4 -
3 -
2 -
1 - Legs (Tall)



Key

	- Source 4 19" @ 750 Watts
	- Source 4 26" @ 750 Watts
	- Source 4 36" @ 750 Watts
	- Source 4 50" @ 750 Watts
	- Source 4 70" @ 750 Watts
	- Meteor EllipScan
	- Q3 Spectra Scroller
	- S4 Top Hat
	- SeaChanger
	- GAM FilmFx
	- GAM Twin Spin
	- Source 4 19" @ 750 Watts
	- Source 4 26" @ 750 Watts
	- Source 4 36" @ 750 Watts
	- Source 4 50" @ 750 Watts
	- Source 4 70" @ 750 Watts
	- Allman 8" Fresnel @ 1000 Watts
	- PAR 64 Wide @ 1000 Watts
	- PAR 64 Medium @ 1000 Watts
	- PAR 64 V. Narrow @ 1000 Watts
	- Allman Spectra Cyc 100
	- Vivid 11
	- VanLite VL500D @ 1200 Watts
	- Practical (See Notes)



Show:	The Velveteen Rabbit	
Theater:	Taylor Theatre - UNCG	
Director:	Rachael Briley	
Plate:	Scale:	Date:
	1/4" = 1' - 0"	October 22, 2014
Designer:	View:	
Ken White	Master Plot	
Assistant Lighting Designer	Draft:	
Mandy Thomas	K.W. (VectorWorks 2013)	