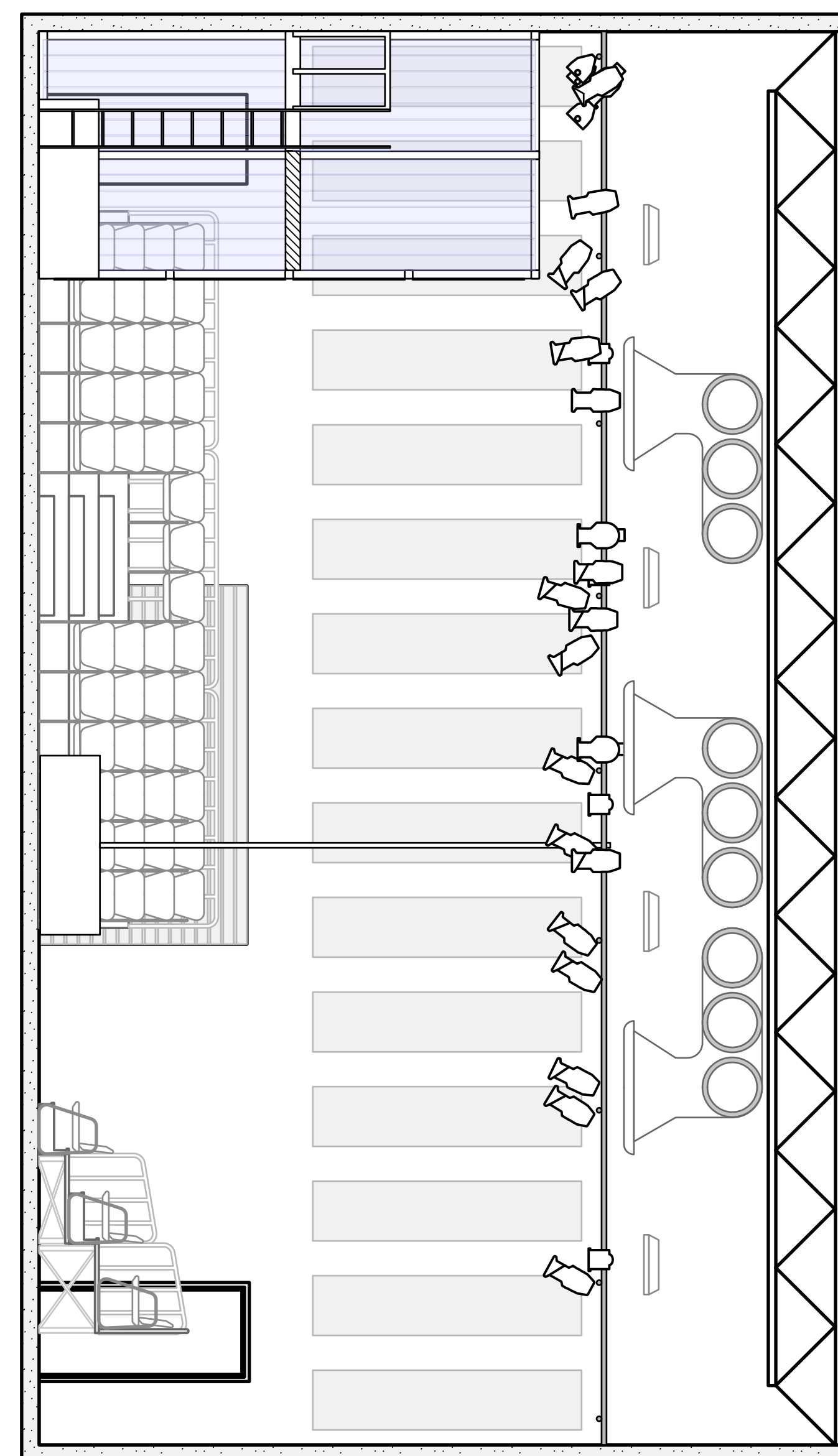
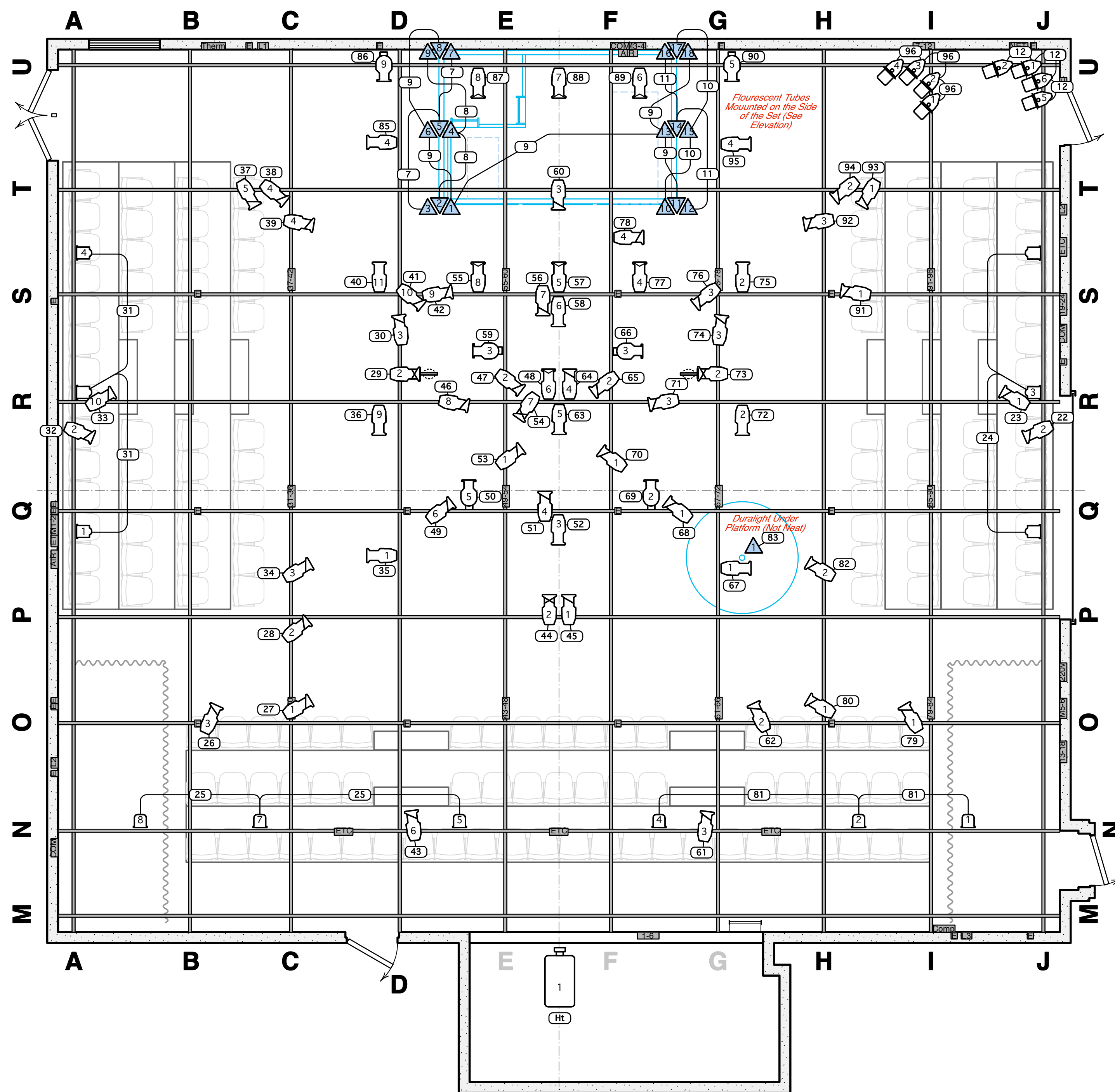


**Key**

- Source 4 50° @ 575 watts
- Source 4 36° @ 575 watts
- Source 4 26° @ 575 watts
- Source 4 19° @ 575 watts
- Altman 4.5 x 6 @ 750 watts
- Altman 6 x 9 @ 750 watts
- Altman 6 x 9R @ 750 watts
- Altman 6 x 16 @ 750 watts
- 4' Fluorescent Tube
- Top Hat for Source 4
- Altman 6" Fresnel @ 750 watts
- Colortran 6" Fresnel @ 1000 watts
- Strand 6" Fresnel @ 750 watts
- Wide PAR64 @ 1000 watts
- Source 4 V. Narrow PAR @ 750 watts
- Source 4 Narrow PAR @ 750 watts
- Source 4 Medium PAR @ 750 watts
- Source 4 Wide PAR @ 750 watts
- Practical (See Notes)
- AF 1000 Strobe
- Floor Mount
- See Detail

# Notes:

- Units number from Booth to Dance Studio, Rolling Door to Main Entrance, and Top to Bottom.
- Heights for Booms/Torms are to the Center of the cross pipe.
- All floor runs of cable must be VERY NEAT!
- Units drawn beside the pipe are to be "Side Hung."



Show: **Self Defense - or the Death of Some Salesmen**  
 Theater: **Studio Theatre - Louisiana State University**  
 Director: **Joanna Battles**  
 Plate: Scale: **1/4" = 1' - 0"** Date: **February 28th, 2009**  
 Designer: **Ken White** View: **Light Plot & Section**  
 M.E.: **Ken White** Draft: **K.W. (VectorWorks 2010)**